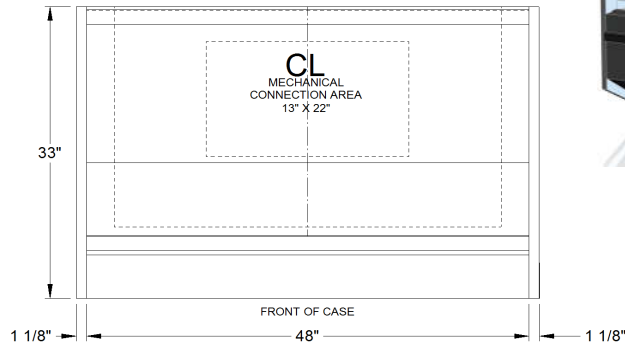
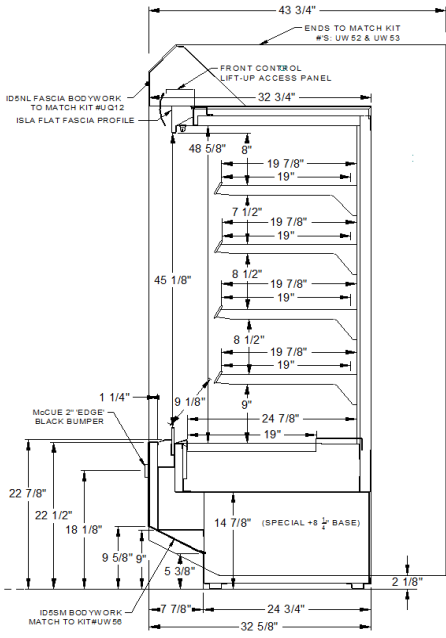




**SELF SERVICE MULTIDECK HOT CASE**

HUSSMANN - IM - 06 - (X\*)(3, 4, 5, 6) - H (CHINO)



**ELECTRICAL DATA:**

208 VOLT MODELS *	VOLTS	PH	HZ	TOTAL HOT LEVELS ***	WATTS	AMPS	WIRES **	CANOPY LIGHTS		SHELF LIGHTS		OPTIONAL LEDGE LIGHTS		TOTAL LIGHTS		
								AMPS	WATTS	# ROWS	AMPS	WATTS	AMPS	WATTS	AMPS	WATTS
								IM-06-X4-H-EC10	208	1	60	5	4056	19.5	4	0.26

LEGEND		
N/A -	NOT AVAILABLE	
TBD -	TO BE DETERMINED	
SBO -	SUPPLIED BY OTHERS	
EXTERNAL END PANEL WIDTH KEY		
# OF END PNLs	END PNL WIDTH (IN.)	TOTAL ADDED LENGTH (IN.)
1	1.125	1.125
2	1.125	2.25

240 VOLT MODELS *	VOLTS	PH	HZ	TOTAL HOT LEVELS ***	WATTS	AMPS	WIRES **	CANOPY LIGHTS		SHELF LIGHTS		OPTIONAL LEDGE LIGHTS		TOTAL LIGHTS		
								AMPS	WATTS	# ROWS	AMPS	WATTS	AMPS	WATTS	AMPS	WATTS
								IM-06-X4-H-EC10	TBD	TBD	TBD	TBD	TBD	TBD	TBD	TBD

MODULE NOMENCLATURE KEY:	
IM =	ISLA MODULE
*** 06 =	5 HEATED LEVELS 83" HIGH
* C, E, I =	CENTER, END or INLINE CASE
(#) =	(MODULE LENGTH IN FEET)
H =	HOT SELF SERVICE MULTIDECK
EXAMPLE	IM-06-I4-H = ISLA MODULE, 83" HIGH, INLINE 4' WIDE, HOT SELF-SERVICE MULTIDECK

\* X = C, E, I C = CENTER, E = END, I = INLINE

\*\* INCLUDES GROUND WIRE

\*\*\* TOTAL HEATED LEVELS = # ROWS OF SHELVES + BOTTOM WARMING SURFACE

**OPTIONS/NOTES:**

- NOTE: CASE WIDTH INCLUDES END PANELS WITH OPTIONAL INTERIOR END PANELS
- NOTE: CASES MUST BE GROUNDED
- NOTE: LED LIGHTS ARE NOT AVAILABLE ON HOT CASES AT THIS TIME.
- NOTE: FOR TOTAL ELECTRICAL LOADS ADD LIGHT AMPS HOT LEVEL AMPS.